



**Landscape C of E Primary School**  
**Landscape, Nr Ashburton, Devon. TQ13 7LY**  
**Tel: 01803 762656**  
**Email: [adminlandscape@thelink.academy](mailto:adminlandscape@thelink.academy)**



## **NEWSLETTER Friday 16<sup>th</sup> May 2025**

Dear Parents,

Well, we've certainly had a rather busy week in school! I would like to take this opportunity to say a big well done to the year 6s for working so hard this week and to thank the wonderful class 4 SATs team of Mrs Neville, Mrs Pearse, Miss Hart and Mrs Price (alongside our volunteer invigilators) who have been up-beat and encouraged the children throughout the test week. The school is so lucky to have such dedicated staff and supportive parents.

### **LANDSCAPE LEARNERS**

#### **CLASS 1**

What an incredible day Class One had at Stover last week. They started their day with pond dipping, finding many interesting pond creatures - including tadpoles, dragonfly nymphs and water boatmen. After their picnic in the hut, they went on a mini beast hunt. Following on from their visit and the many tadpoles we saw, Class 1 have been learning about the life cycle of a frog. We discussed frogspawn, tadpoles, froglets and frogs. The children then created frog life-cycle crowns to support their learning!

**CLASS 2** have been immersed in learning about flowering plants in both Science and Art. The children have been closely observing flowering plants with magnifying glasses before drawing and labelling a diagram. They thought carefully about each part of the plant and its job.

In art the children have been looking at the tones artists use and how the contrast between them can create very different visual effects. Today they had great fun using paint, Sharpies and cotton buds to create these pieces. Everyone was rightly proud of the artwork they created and so was Mrs R!

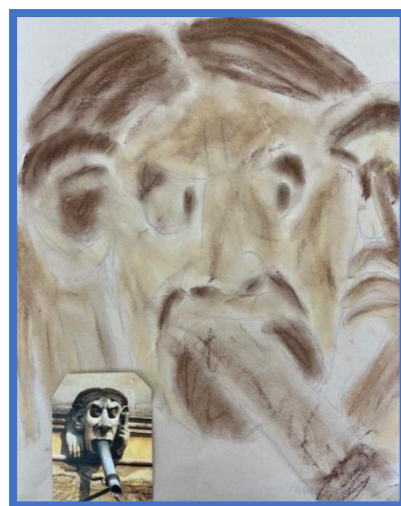




**CLASS 3** are learning about living things and their habitats in science. The children carefully observed and recorded the living things they found in their local area.



**CLASS 4** have continued their studies of gargoyles. They were given a choice of media to convey the visual elements of colour, tone and form. The results show excellent technique and incredible artistic style.



#### **ETHOS VISION AND VALUES:**

We have continued with our value of Trust, looking at how friendship relies on trust. Trust is a really important value. It must be earned. If we do not trust someone it is very hard to build a good friendship with them. Follow the link for ideas on how you can support this value at home. [Landscape Church of England Primary School - Values and Collective Worship](#)



## FOLS – a message from Michelle

Thank you to everyone for supporting the ice lolly sales so far, a lovely treat for the children and a great way to add a little boost to the FOLS funds.

I have put a sign-up sheet for ice lolly sales by the office. Please put your name down for a Friday afternoon if you can (in the hope that this lovely weather continues). It means buying some ice lollies from a supermarket and bringing them to school in a cool box at the end of the day to sell for £1 each (you then take out what you have paid for the lollies). It isn't a big job, but the children love it.



There will be a letter coming out next week about this year's **sponsored Colour Run which will be on Friday 20th June after Sports Day on the school field**. We will need quite a few volunteers for setting up and throwing the colour, so please let us know if you are able and willing.

**Summer Fair will be – Friday 4th July** any ideas or offers of help are extremely welcome. We would like to extend an invite again to any external stall holders, please let any friends or family know £15 per table, places are limited.

Many thanks, Michelle

## SAFEGUARDING & ATTENDANCE

Attendance: (Our school target is 96.8%)	
Whole school	96.5%
Class 1	90.55
Class 2	98.7%
Class 3	97.7%
Class 4	96.8%
Well done Class 2!	

This free guide explores Minecraft – a gaming favourite for children and adults alike. It highlights the potential risks, including online strangers, in-game bullying and unintended spending. Follow the link below for more information

[What You Need to Know: Minecraft | Free E-Safety Guide](#)

If you are concerned about a child's wellbeing, please contact the school or in non-school hours contact MASH on 0345 155 1071.

Our designated safeguarding officer is Mrs. Ryder and the deputy safeguarding officer is Mr. Ansermoz.

**What Parents & Educators Need to Know about MINECRAFT**

Still the best-selling game of all time, Minecraft is a bastion of creativity and community, with hundreds of millions of players building and crafting in its almost endless world. The popularity of Minecraft among gamers of all ages means it's important to remain informed about the game, including how to play it safely and whether it's suitable for the children in your care. That's why we've created this guide explaining the risks associated with Minecraft and how to ensure a purely enjoyable gaming experience.

**WHAT ARE THE RISKS?**

**SCARY ELEMENTS**  
While Minecraft can be seen as a kind of digital LEGO, certain game modes include creature companions that emit sound effects. These can be a bit too frightening for some younger players, potentially leading to distressing in-game content and other encounters – although the content is quite basic and free from any real depiction of violence.

**GRIEFING**  
Some players in Minecraft have been known to deliberately damage or destroy another player's creations. This behaviour is known as griefing, or in some cases, bullying. It intentionally ruins someone else's experience by erasing hours of their work and forcing them to start over. Many public servers report griefing as a serious offence and often ban those who engage in it.

**ADDICTIVENESS**  
Minecraft's focus on creativity means that, as with any creative endeavour, it can be easy to get carried away. If your child is finding it difficult to manage their time because they're down in by Minecraft's gameplay loop of resource gathering and building elaborate projects, it could have a knock-on effect on their social interactions and academics.

**PUBLIC SERVERS AND COMMUNICATIONS**  
With public servers being so easily accessible in Minecraft, it's highly likely that children will end up chatting with strangers through the in-game text chat. Some servers even place an emphasis on social interaction, actively encouraging communication between players. While there's nothing inherently wrong with this, it does carry certain risks in relation to the unknowns around speaking with strangers online. Players who host their own server may have their IP addresses exposed, posing a further security concern.

**ADDITIONAL PURCHASES**  
Minecraft is available as a free trial on a variety of devices; however, the full game requires a one-off purchase. After that, players have the option to buy additional cosmetic upgrades or subscribe to Minecraft Realms, which is an entirely optional subscription service that allows users to run their own private server to play with friends. Without proper supervision, younger players may end up making unintended or excessive purchases.

**Advice for Parents & Educators**

**CHOOSE THE RIGHT MODE**  
Selecting Creative or Peaceful mode allows children to play Minecraft without having to contend with enemies. It's a great way for you to get used to playing the game with them, since the difficulty level is far lower. This allows you to work together on a long-term project, creating something special without the threat of enemies and creatures attacking you or damaging your building.

**HOST A PRIVATE SERVER**  
The easiest way to find a safe server for children to play on is to make one yourself. Hosting a server prevents strangers from finding it, unless they've been given its address and password. A private server also lets you control who's allowed to enter and – if necessary – ban anyone who shouldn't be there. This is the closest equivalent to parental controls in Minecraft, meaning a private server, however, will cost a monthly fee.

**TALK ABOUT STRANGERS**  
At some point in their lives, almost everyone will make contact with a stranger online. Talking to children about online safety, therefore, is essential – as is having a plan for dealing with one hostile or difficult person, as important that a child knows never to tell a stranger about themselves online and that they should come to you straight away if they do encounter a problem.

**RESEARCH CONTENT CREATORS**  
Many of Minecraft's early stages can be an exercise in frustration for players who don't know what to start. Thankfully, there's a wealth of material online and in visual format to help you learn the basics. Just be mindful that some of this content may not be appropriate for children, so you should consider watching it yourself first.

**PLAY MINECRAFT WITH YOUR CHILD**  
As a creative building tool, Minecraft makes it great fun for children to learn up and construct vast buildings accompanied by imaginative landscapes, much like working with LEGO or model kits. Playing in a game mode that includes enemies can encourage critical thinking and teamwork; however, you should consider which game mode is appropriate for the child in your care.

**Meet Our Expert**  
Lloyd Coombes is a gaming editor at the Daily Star, and has worked in games media for more than 8 years. A long-time gaming enthusiast, he is also a parent and therefore a keen advocate of online safety for children of all ages.

**Wake Up Wednesday**  
The National College

Users of this guide do so at their own discretion. No liability is entered into. Current as of the date of release: 14.03.2023

## DATES FOR YOUR DIARY

23 <sup>rd</sup> May	Break up for half term
Looking further ahead...	
2 <sup>nd</sup> June	Bank Holiday
3 <sup>rd</sup> June	Summer term begins
3 <sup>rd</sup> June, 4 <sup>th</sup> June, 5 <sup>th</sup> June, 11 <sup>th</sup> June and 12 <sup>th</sup> June	Class 4 swimming sessions

9 <sup>th</sup> June	School photographer in – Class photos and Leavers
16 <sup>th</sup> -19 <sup>th</sup> June	Y6 Bikeability – bikes need to be in school.
20 <sup>th</sup> June	Sports day – am field events for children with Mr Tanner 1:15 parents invited to join our traditional races event followed by FOLS colour run
24 <sup>th</sup> June	Class 2 Trip to Riverford
26 <sup>th</sup> -27 <sup>th</sup> June	Class 3 Wild Wise Camping Trip
4 <sup>th</sup> July	FOLS Summer Fair
7 <sup>th</sup> - 9 <sup>th</sup> July	Class 4 Residential to Bristol
10 <sup>th</sup> July	Class 3 forest school day @ Broadhempston community woodland - please drop and collect from the venue.
17 <sup>th</sup> July	Circus Skills Workshop and show for KS12 children
22 <sup>nd</sup> July	Leavers service @ St Matthew's 10am Break up for summer.

A few photos from our annual May event ...just because they are lovely!



That's all the news for now. Let's hope the sun continues to shine for a lovely weekend!

*Jill Ryder.*

